

# Rose Care



## PLANTING

At and after planting, apply **ferti-lome® Root Stimulator**. Mix and pour at the base of the plant. Make at least 3 applications, 10 to 14 days apart. May be applied until gone or throughout the first year.

At planting, apply your first application of **ferti-lome® Start & Grow**, repeat application in 3 months. This slow release fertilizer will slowly feed the plant to encourage establishment and later encourage more branching and more flowers.



## FERTILIZER

Apply **ferti-lome® Rose Food** and reapply every 6 to 8 weeks. This rose food has 5 essential micronutrient for maximum color of leaves and flowers. If insects are a problem, get the same great fertilizer with a systemic insecticide, apply **ferti-lome® Rose & Flower Food with Systemic Insecticide**, repeat every 6 to 8 weeks.



## FUNGUS – LEAF SPOT OR BACTERIA

To prevent fungus and bacterial issues, apply **ferti-lome® “Green” Label Copper Fungicide**, make 2 or 3 applications 7 to 10 days apart.

To prevent only the fungus, apply **ferti-lome® Liquid Systemic Fungicide**, make 2 or 3 applications 10 to 14 days apart.



## WORMS OR CATERPILLARS

For worms or caterpillars on roses, apply the natural product, **ferti-lome® “Green” Label Spinosad** or **ferti-lome® “Green” Label Spinosad Soap RTU**. Make 2 applications 4 to 7 days apart.

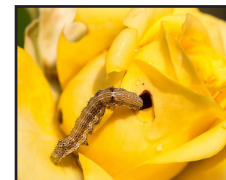
**ferti-lome® “Green” Label Spinosad Soap** is also effective on; aphids, spidermites, ants and more.



## GENERAL INSECTS

A good natural choice is **ferti-lome® “Green” Label Triple Action**. This is neem oil and is an insecticide, fungicide and a miticide and kill almost all stages of insects.

If someone wants hard chemistry for many insects, (not that effective on worms), apply **Hi-Yield® Lawn, Garden, Pet & Livestock Spray** or **Hi-Yield® Garden, Pet & Livestock Dust**. These two are much safer on bees than Sevin®.



## WEED CONTROL

If weed control is needed, start in the spring and apply **Hi-Yield® Turf & Ornamental Weed & Grass Stopper**. Apply and water in and it will prevent weeds for 3 to 4 months.

If grass is the problem, spray **ferti-lome® Over the Top** or **Hi-Yield® Grass Killer**, This can be applied right over the plant, without harming the rose plant. Increase the effectiveness with the addition

